

THE “ELECTRONIC PURSE”: *What it is and how does it work*



ERSUinforma by URP

WHAT IS THE “ELECTRONIC PURSE”?



IT IS A NEW FUNCTIONALITY OF THE APP, A KIND OF DIGITAL RECHARGEABLE WALLET. YOU CAN USE IT TO PAY THE MEALS AT THE UNIVERSITY CANTEENS, IN REPLACEMENT OF CASH PAYMENT

HOW DOES IT WORK?

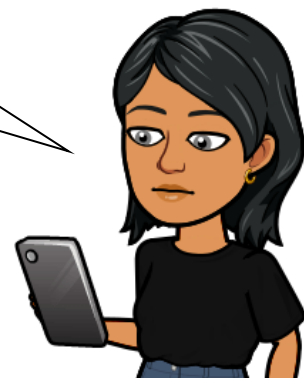
THE “ELECTRONIC PURSE” WORKS AS A VIRTUAL PREPAID CARD: YOU CHARGE MONEY THROUGH YOUR CREDIT CARD OR PREPAID CARD (IN THIS CASE THE PURSE WILL CHARGE IMMEDIATELY) OR WITH “PAGOPA” (ALSO IN THIS CASE, IF YOU WILL USE CREDIT CARD/PREPAID CARD, THE PURSE WILL CHARGE IMMEDIATELY; IF YOU PRINT THE PAYMENT NOTICE AND PAY, FOR EXAMPLE IN A TABACCHI, THE TIMES WILL BE LONGER)



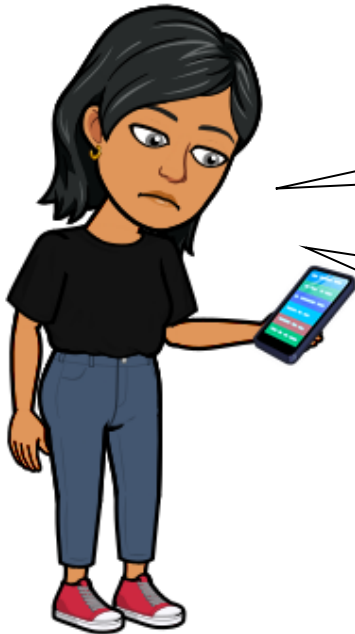
AT THE BEGINNING YOU WILL BE ABLE TO RECHARGE USING A SPECIAL ONLINE PROCEDURE AVAILABLE IN THE HOME OF YOUR PERSONAL PAGE OF THE ERSU PORTAL...IN THE FUTURE, YOU WILL BE ABLE TO DO IT ALSO FROM THE APP



THE CREDIT WILL DECREASE WHEN THE CASH OPERATOR CONFIRMS THE MEAL PREVIOUSLY SELECTED BY THE APP

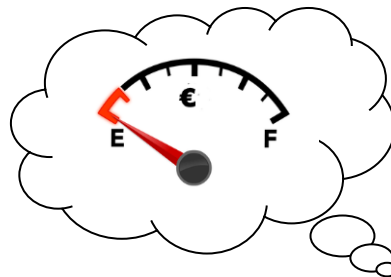


WHEN CAN YOU SEE THE REMAINING CREDIT?



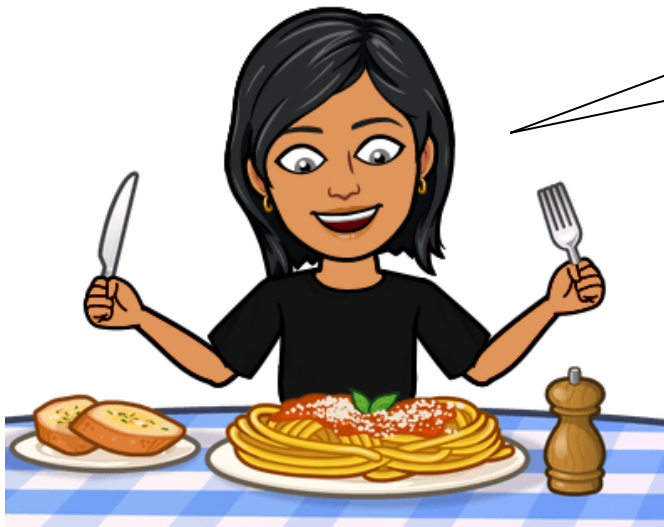
THE REMAINING CREDIT WILL BE AVAILABLE IN THE HOME OF THE "ERSUPALERMO" APP

YOU WILL BE ABLE TO CONSULT THE REMAINING CREDIT AND ALL OTHER INFORMATION (STATUS OF PAYMENTS, RECHARGES MADE, ETC.) ALSO FROM THE ERSU PORTAL



ATTENTION: IN THE ELECTRONIC PURSE, YOU MUST ALWAYS HAVE A SUFFICIENT CREDIT AVAILABLE TO PAY THE MEAL...SO KEEP IT ALWAYS UNDER CONTROL!





HOWEVER, WE WILL GIVE
YOU MORE DETAILS SOON.

CIAO CIAO!



Work in progress... 😊